

Supplementary material

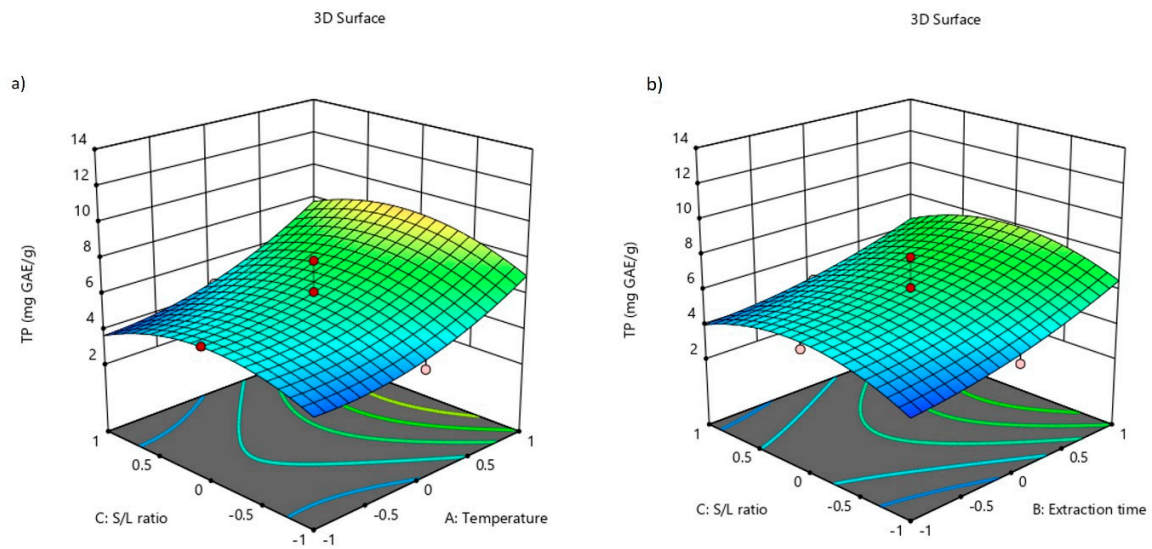


Figure S1. (a,b) Other less significant effect of NADES extraction parameters (temperature, extraction time and S/L ratio) on total phenolic content (TP)

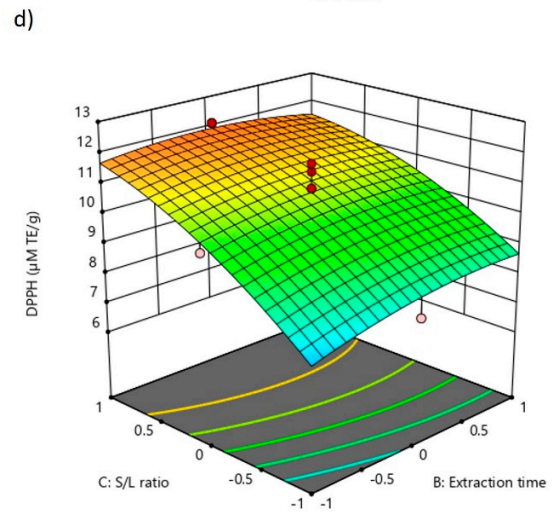
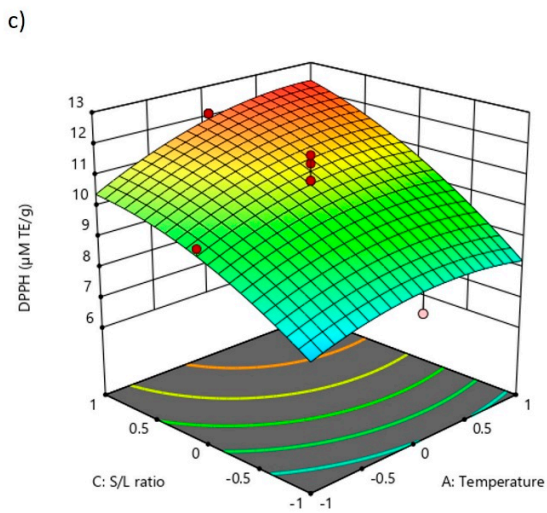
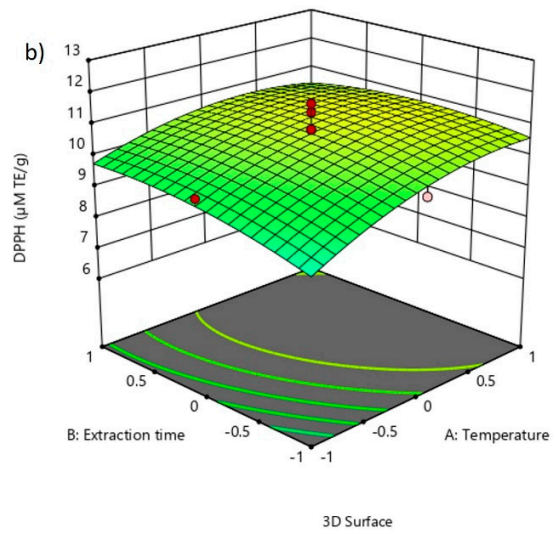
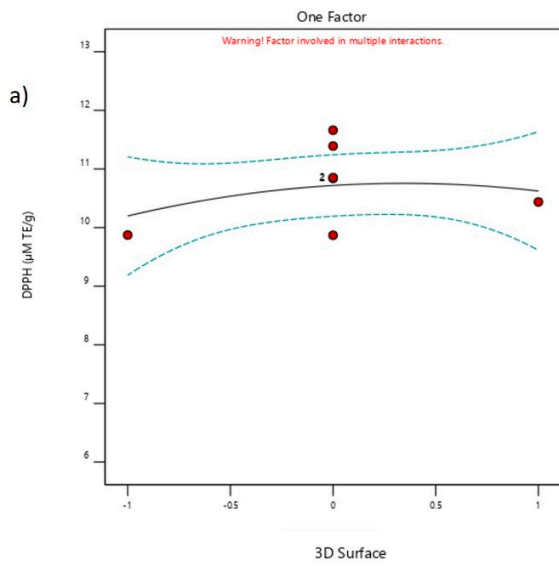


Figure S2. (a-d) Other less significant effect of NADES extraction parameters ((a) temperature, (b) extraction time (c,d) and S/L ratio) on DPPH assay

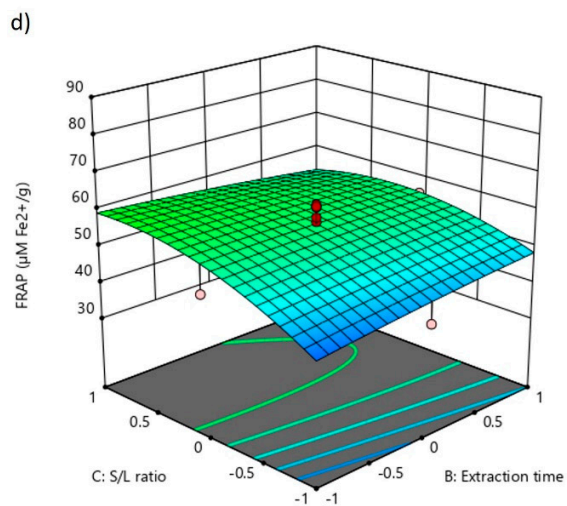
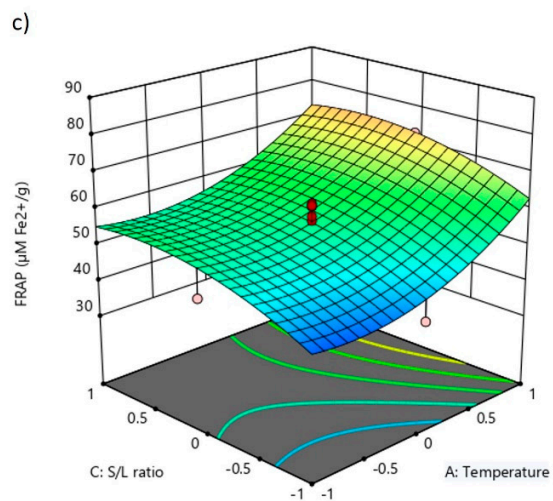
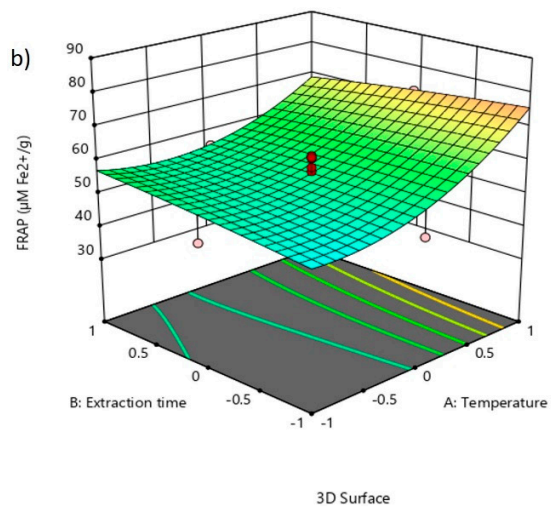
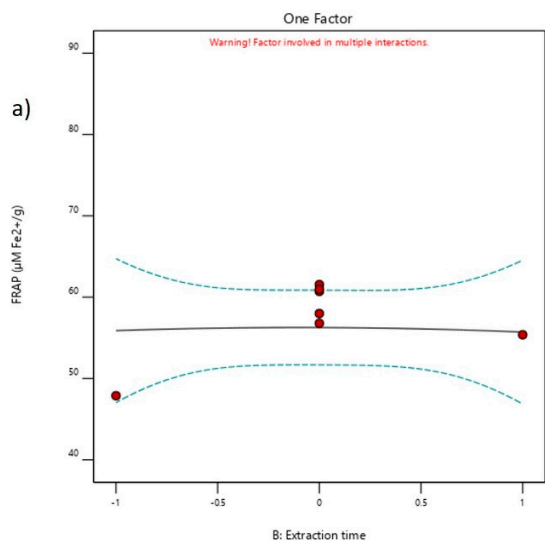


Figure S3. (a-d) Other less significant effect of NADES extraction parameters ((a) temperature, (b) extraction time and (c,d) S/L ratio) on FRAP assay

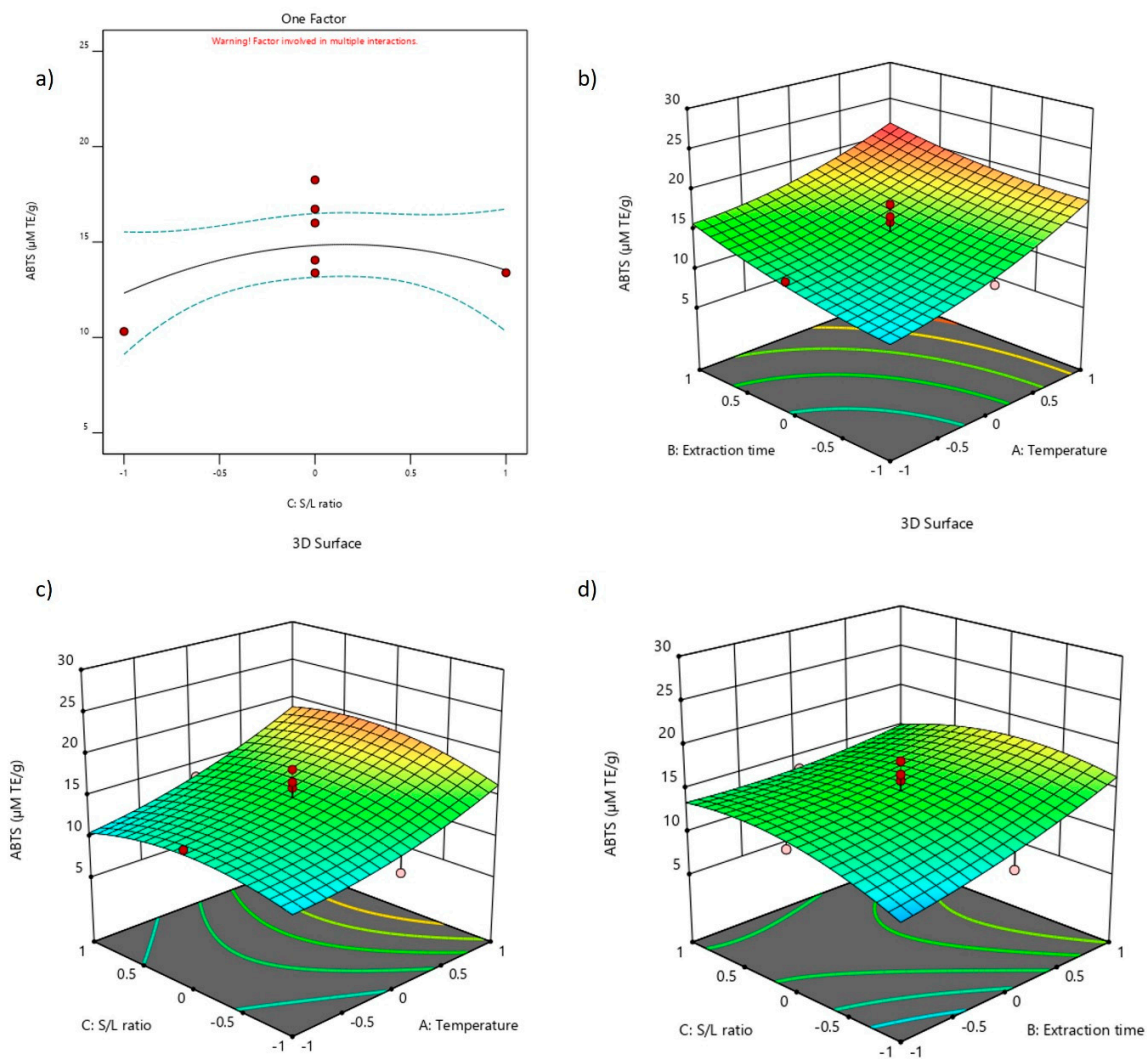


Figure S4. (a-d) Other less significant effect of NADES extraction parameters (temperature, extraction time and S/L ratio) on ABTS assay

Table S1. Correlation matrix with Pearson's coefficient of correlation for TP, DPPH, FRAP and ABTS

r	TP	DPPH	FRAP	ABTS
TP	1			
DPPH	0.308	1		
FRAP	0.552*	0.574*	1	
ABTS	0.845*	0.478*	0.711*	1

r - Pearson's correlation coefficient

* $p < 0.05$